

OSI SINGLE-PHASE AC WATTHOUR TRANSDUCER/TRANSFORMER MODEL SWH-

SPLIT-CORE

DESCRIPTION

The model SWH is a single-phase bidirectional Watthour transducer with current transformer. The model SWH has a Form A solid-state relay pulse output.

**5 YEAR
WARRANTY**



Measuring
Equipment
7N93

AC VOLTS	AC AMPS (through Window)	MODEL
115	0-100	SWH-1100
	0-200	SWH-1200
	0-400	SWH-1400
230*	0-100	SWH-2100
	0-200	SWH-2200
277**	0-100	SWH-3100
	0-200	SWH-3200

* May also be used for 208V and 240V applications.

** Not UL listed.

FEATURES

- Easy-to-install split-core design
- LED indications of proper installation/operation

APPLICATIONS

- Energy Allocations
- Sub Metering
- Revenue Metering
- Process Control



ORDERING INFORMATION

Example: 100Aac Input For Use On
230Vac L-N Voltage
SWH-2100

SPECIFICATIONS

INPUT

Voltage..... See Table
Current.....(through window)..... See Table
Frequency Range48-62Hz
Power Factor..... Any
Burden
Voltage..... <0.2VA
Overload
Voltage..... 120% of Nominal
Current..... 125% of F.S.

DIELECTRIC TEST

Input/Output 2250Vac

INSTRUMENT POWER

Standard Self-powered

Consult Factory for Custom Pulse Rates

OUTPUT

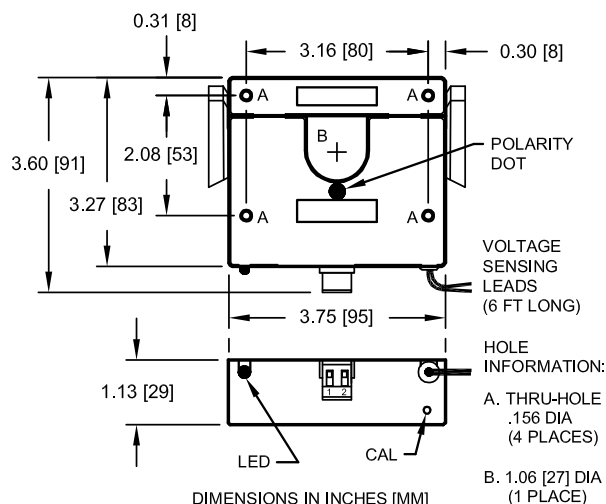
LED..... Energy Rate and Direction Indicator
Green = Forward Power
Red = Reverse Power
Blinks at same rate as Wh pulse
Wh Pulse
Type.... Form A, Solid-State Relay, 30Vpk, 100mA max.
Scaling..... 10Wh per pulse
Consult Factory for Custom Pulse Rates
Pulse Duration..... 200ms
Forward Power..... Normally Open with contact closing
Reverse Power.. Normally Closed with contact opening

ACCURACY ±1.0% F.S.

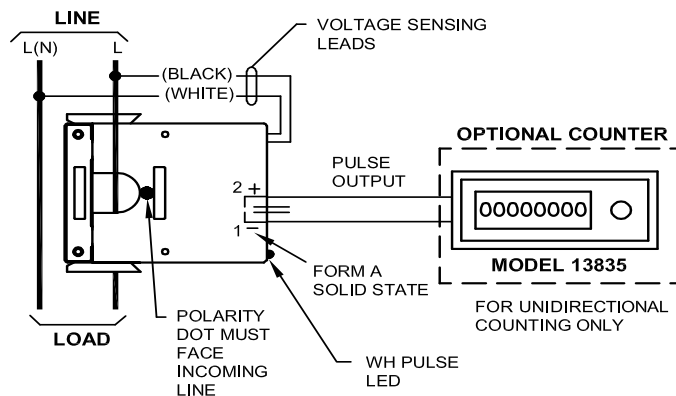
TEMPERATURE & PHYSICAL

Temperature Effect (-20°C to 65°C) ±1.0% F.S.
Weight..... 1.0 lb

DIMENSIONS



CONNECTIONS



Dwg# 0902-00383-B

OHIO SEMITRONICS, INC.

4242 REYNOLDS DRIVE * HILLIARD, OHIO * 43026-1264
PHONE: (614) 777-1005 * FAX: (614) 777-4511
WWW.OHIOSEMITRONICS.COM * 1-800-537-6732

INSTALLATION INSTRUCTIONS

1. Installation should be performed by qualified electricians only!
2. Make sure electrical service is disconnected before making any electrical connections.
3. Branch circuit protection is required to be provided in accordance with the National and Local codes of the inspection authority.
4. Route wires as required and secure to terminals per connection diagram on this sheet and on the unit.
5. Transducers are suitable for installation on up to 240Vac lines - check voltage rating of specific model.
6. To prevent contact with live circuits, when installed on a bare bus bar, the transducer is required to be mounted in an enclosure that requires the use of a tool for access. When installed on an insulated cable this second enclosure is not required.

OPERATING INSTRUCTIONS

1. This unit is intended for indoor use at altitudes up to 2000 meters.
2. Transient overvoltages according to Installation Category (overvoltage category) II, pollution Degree 2.
3. If cleaning of the exterior surface is necessary, de-energize all services of supply and brush with a soft brush or blow off with low pressure air. Use appropriate eye protection. Not suitable for hose-down cleaning.
4. Maximum relative humidity 80 percent for temperatures up to 31°C decreasing linearly to 50 percent relative humidity at 65°C.
5. Maximum operating temperature range is -20°C to 65°C.



UL approved for USA and Canada



Equipment approved as Double Insulated

WARRANTY STATEMENT

Ohio Semitronics Inc., warrants this unit to be free of defects in material and workmanship for a period of five years from date of shipment. This unit must not be used in any manner other than as specified in this document.