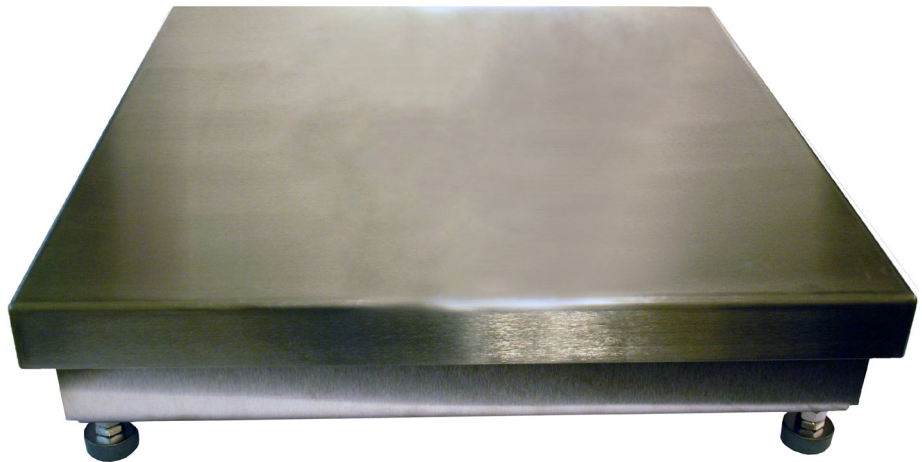


Hardy Enviro™ Bench Scales

Applications

PROCESS WEIGHING

- Minor Ingredients or Hand-Add applications
- Small Batch Reactor Applications in Chemical/Biochemical
- Product Inspection: Checkweighing,
- Piece Count, Portion Control
- Shipping



Features

Sanitary Washdown

- 304 Stainless Steel base and platter
- IP67 Rated Load Cell
- Closed corners on platform cover
- Withstands high pressure and high temperatures

HARDY Load Sensor

- Stainless Steel
- Corner adjusted

Capacities from 2 lbs to 100 lbs

Sizes from 10" x 10" to 18" x 18"

NTEP Certification

Overload Protection

- **300% R.O.* Overload**
- **100% R.O. End Loading**
- **100% R.O. Corner Loading**

(*Rated Output)

The Hardy Process Solutions Enviro™ bench scale meets the needs of the food and chemical industries for sanitary scales that withstand high-pressure, high-temperature washdown environments.

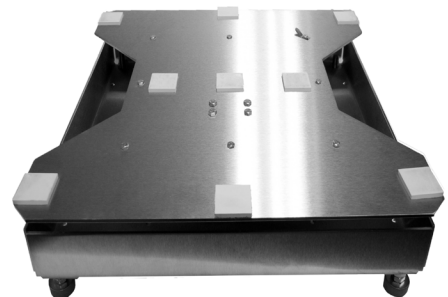
All Hardy Enviro Scales come standard in 10"x10", 12"x12" and 18"x18" and range in capacity from 2 lbs – 100 lbs (0.90 kg to 45.4 kg).

Made of 304 stainless steel and featuring an IP67 rated load cell, the Enviro washdown bench scales are designed for easy cleaning and sanitizing. Welds are continuous, which prevents processing materials and moisture from accumulating and forming colonization points for harmful bacteria like Salmonella, E. Coli, and Listeria Monodytogenes.

Closed corners on the platform cover prevent splash collection of water or processing materials inside the scale. Busing and spacers are used to eliminate lap joints and facilitate quick and easy cleaning.

The ultra-smooth stainless platter resists surface penetration and is easy to clean, adhering to the AMI's strict standards for safety in RTE areas and other production applications. The superior sanitary design and durable stainless steel construction of the Enviro™ washdown bench scales are a perfect foundation for a reliable sanitary bench scale configuration.

At Hardy, we believe that industrial weighing systems should be EASY to engineer and to operate. Simplicity drives the LEAST TOTAL COST. Want MORE PRODUCTIVITY at the LEAST TOTAL COST to own? Call Hardy to discover how today!



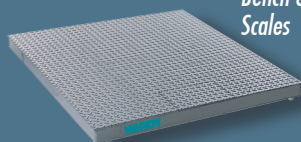
COMPONENTS TO COMPLETE YOUR HARDY SYSTEM

Hardy Floor Scales and Load Points

Hardy carries a wide variety of strain gauge load points and scale mounts to accommodate your application requirements.



*ADVANTAGE Series
with C2 Calibration*



*Bench & Floor
Scales*

Weighing Instruments Dedicated to Your Applications

Controllers, Weigh Modules, Weight
Processors & Transmitters



*Allen-Bradley® Compatible
Plug-in Weigh Scale Modules*



*HI 3000 & HI 4000
Controllers and
HI 6000 Series Weight
Processors*



Hardy Enviro Bench Scale

Specifications

IP Rating:

- IP67

Load Cell Type:

- Stainless Steel, Potted

Base Construction:

- 304 Stainless Steel

Platter Construction:

- 304 Stainless Steel

Capacity Range:

- 2lb to 100lb

Minimum Overload Protection:

- 300% Rated Capacity

Minimum End Loading Protection:

- 100% Rated Capacity

Minimum Corner Loading Protection:

- 100% Rated Capacity

Intrinsically Safe:

- Yes

Legal for Trade Rating:

- NTEP

Resolution:

- 5,000 divisions of full scale

Sanitary Specification:

- Follows sanitary specifications for processing equipment developed by the American Meat Institute (AMI)

Standard Sizes:

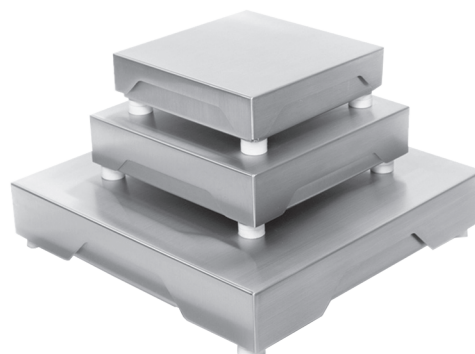
- 10" x 10" x 2.89" H
- 12" x 12" x 3.10" H
- 18" x 18" x 3.87" H

Shipping Weight

- 10" x 10": 25 lbs (11.34kg)
- 12" x 12": 38 lbs (17.2 kg)
- 18" x 18": 59 lbs (26.8 kg)

Standard Sizes and Capacities

Model #	Platter Size	Capacity
HIWDPS-1010-0002	10" x 10"	2 lb
HIWDPS-1010-0006	10" x 10"	6 lb
HIWDPS-1010-0010	10" x 10"	10 lb
HIWDPS-1010-0025	10" x 10"	25 lb
HIWDPS-1212-0030	12" x 12"	30 lb
HIWDPS-1212-0050	12" x 12"	50 lb
HIWDPS-1818-0050	18" x 18"	50 lb
HIWDPS-1818-0100	18" x 18"	100 lb



HARDY
PROCESS SOLUTIONS
Measurement • Automation • Productivity

Hardy Process Solutions

9440 Carroll Park Dr.

San Diego, CA 92121

tel. +1-858-278-2900

tel. 800-821-5831

fax +1-858-278-6700

www.hardysolutions.com

hardyinfo@hardysolutions.com

ISO 9001:2008
CERTIFIED

Since 1993

Visit our website for:

- full product specifications
- ordering information
- application notes
- technical description
- operator's manual

www.hardysolutions.com

or call us: 800-821-5831

+1-858-278-2900

All information within is subject to change without notice. C2, INTEGRATED TECHNICIAN and ADVANTAGE are registered trademarks of Hardy Process Solutions, Inc.. Allen-Bradley, CompactLogix, MicroLogix and Encompass are trademarks of Rockwell Automation, Inc. All other trademarks or registered trademarks are the property of their respective owners.

ENVIROBEN1114
0400-0036-01B

www.hardysolutions.com • 800.821.5831